

# Shorts Creek Drain

## Board of Determination

Fremont Township Hall

November 7, 2019

6:00 PM



**Brian J. Wendling**

**Saginaw County Public Works Commissioner**

# Meeting Agenda



- I. Introduction
- II. Opening of Board of Determination Meeting
- III. Outline of the Board of Determination Procedure
- IV. Inspection Report
- V. Public Testimony - (3 minutes per person.)
- VI. Vote of Board of Determination
- VII. Appeal Procedures and Closing Comments
- VIII. Adjournment

# Role of the B.O.D.

- The Board of Determination's role is to make one decision:
  1. Whether the project is necessary



# Role of B.O.D. (cont.)

- The Board of Determination DOES NOT decide:
  - ▣ The scope of the project
  - ▣ The cost of the project
  - ▣ How much property owners and municipalities are assessed for the project

Information on these topics will be made available at a later date. Please see a member of the Public Works Commissioner's staff after the meeting if you have questions.



# Public Comment

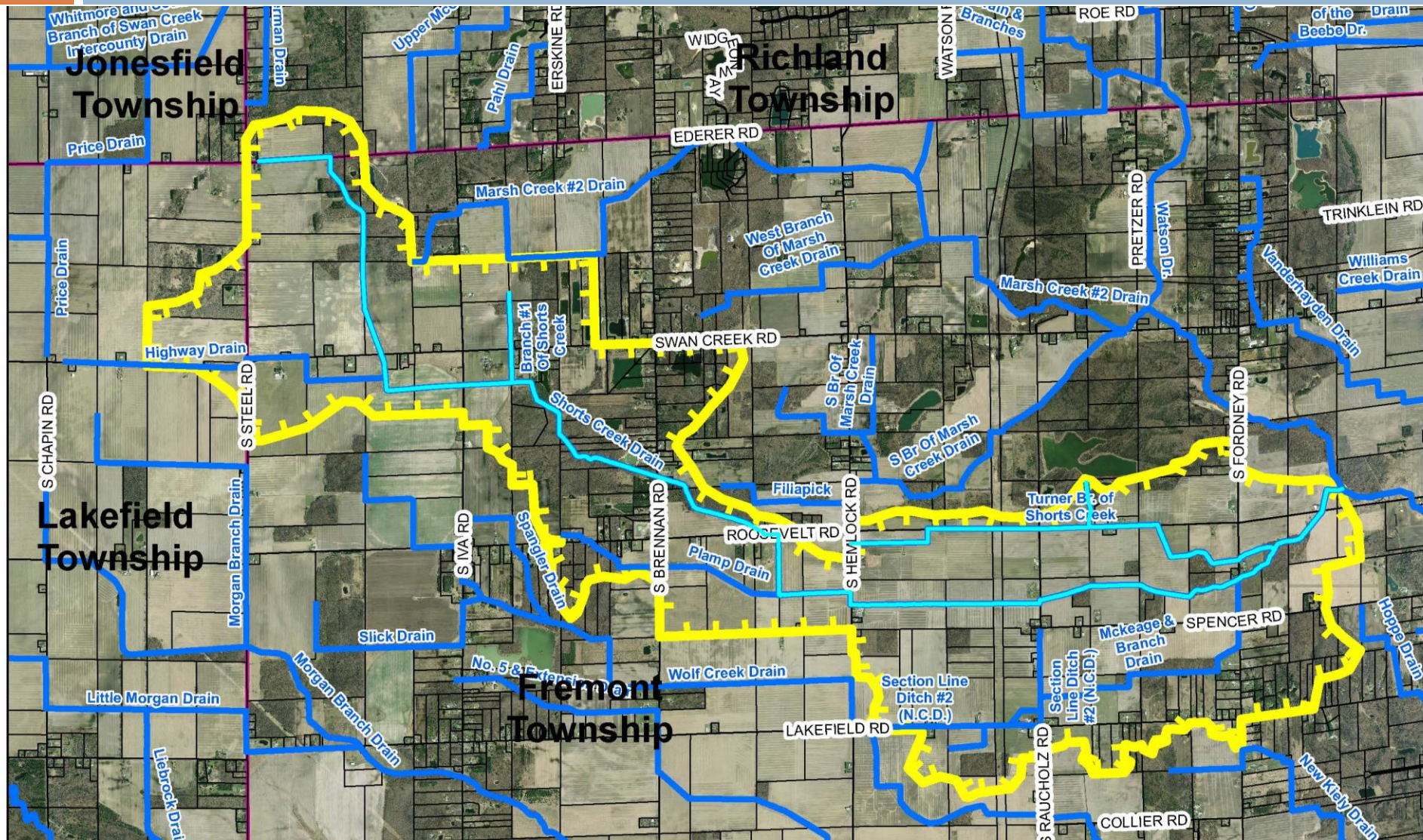


- ❑ The speaking order will be on a first come, first served basis. Petitioner will have a chance to speak first.
- ❑ State your full name and address. Spell your last name for the court reporter.
- ❑ Limit comments to 3 minutes.

# Public Comment (cont.)

- Briefly state your position on the petition for the Shorts Creek Drain. For example: “I support the petition for the Shorts Creek Drain because . . .” or “I oppose the petition for the Shorts Creek Drain because . . . .”
- Remember to stay on topic! Comments for tonight’s meeting are limited to the current petition for the Shorts Creek Drain only.
- The Public Works Commissioner’s staff will gladly speak with you on other topics after the conclusion of tonight’s meeting.

# Estimated Drainage District Map





# Drain Facts

- Where is the Shorts Creek Drain?
  - ▣ See Map – Draft Drainage District Boundary
  - ▣ Approximately 54,873 feet long (10.4 miles)
  - ▣ Watershed area: Approximately 4,374 acres
- What is the drainage district?
  - ▣ Lands that contributes storm water to drain
  - ▣ Drainage District serves as the special assessment district
  - ▣ Shorts Creek Drain Drainage District includes:
    - Fremont Township
    - Lakefield Township
    - Richland Township
    - Saginaw County
    - Landowners – Approximately 310 parcels

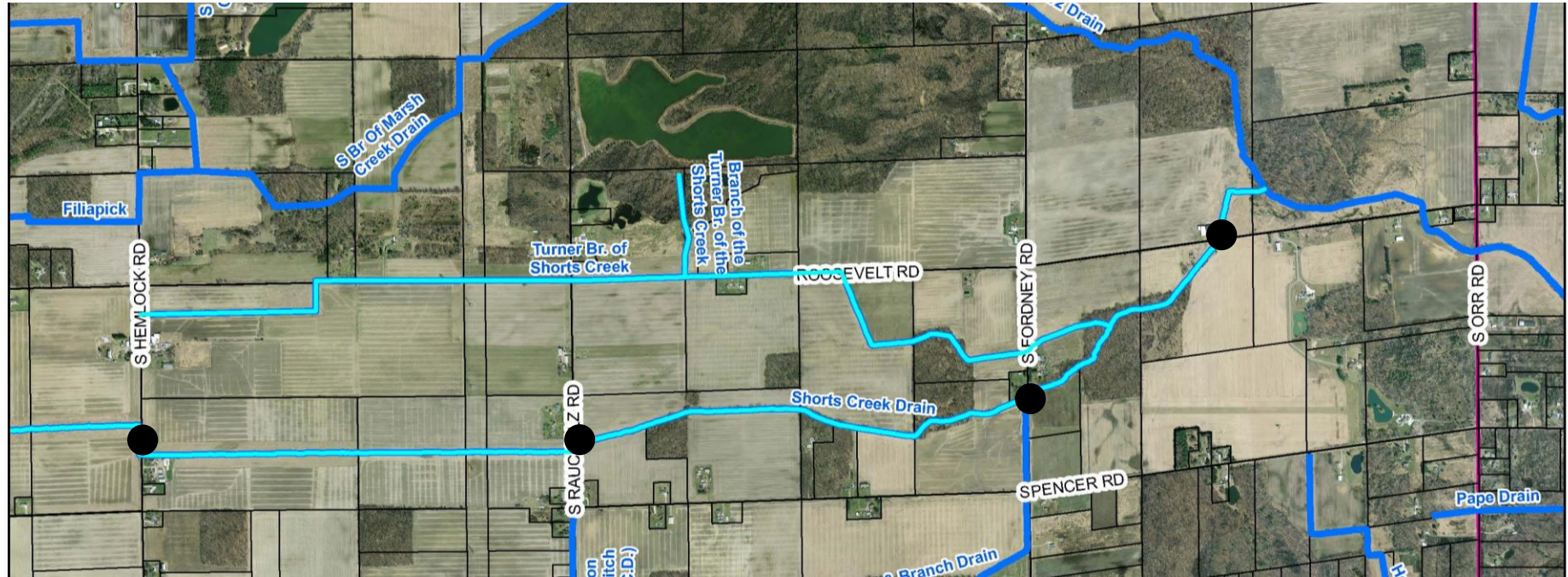
# Drain Facts Continued

- Shorts Creek Drain was established as a county drain in 1901.
- The drain was cleaned out via petition in 1915, 1919, 1943, 1947 and 1972. (Almost 50 years since last major drain clean out).
- Maintenance completed in May-June 2016 along Roosevelt Road (west of Hemlock Road) to shore up the bank at 2 bends and stabilize the bank where it was cutting into the horse pasture.
- The current petition was filed on October 8, 2019. It was circulated by David Frolo and signed by 6 freeholders.

# Drain Inspection

- On July 10, 2019 a field review of the Branch of the Shorts Creek was completed, and on November 4, 2019 a field review of the main drain was completed. The drain inspections were a result of requests for maintenance on the drain. The following was observed:
  - The drain flows through agricultural and rural residential areas.
  - There are large sections of drain which run through wooded corridors. Appears many trees down in the drain.
  - There appeared to be good flow through most of the main drain. The branch drain was very plugged with little water flow.

# Downstream End (Outlet to Hemlock Road)





# Looking Downstream (North) From Roosevelt Road

Trees, brush &  
sediment bars  
along drain





## Looking Upstream (South) From Roosevelt Road

Sediment bars  
with small flow  
channel. Good  
water flow.





## South End - Roosevelt Road Crossing

Sediment  
bar at  
inlet to  
culvert





# Looking Downstream (East) From Fordney Road

Small  
trees  
and  
brush





# Looking Upstream (West) From Fordney Road

Lightly  
wooded,  
good  
water  
flow





## Downstream (East) End of Box Culvert Under Fordney Road





# Looking Downstream (East) From Farm Crossing East of Raucholz Road

Some  
vegetation  
&  
sediment,  
good flow





# Raucholz Road Bridge





# Looking Upstream (South) Along Raucholz Road



Sediment  
bars, small  
trees/brush



# Looking Downstream (North) Along Raucholz Road

Sediment  
bars, small  
trees/brush,  
erosion  
behind  
headwall  
from road  
runoff





# Looking Upstream (West) From Raucholz Road



Sediment  
bars, small  
trees/brush



# Looking Downstream (East) From Hemlock Road

Some  
vegetation,  
good flow





# Looking Upstream – North Along Hemlock Road

Some  
vegetation/  
sediment,  
good water  
flow





# Downstream (East) End of Box Culvert Under Hemlock Road





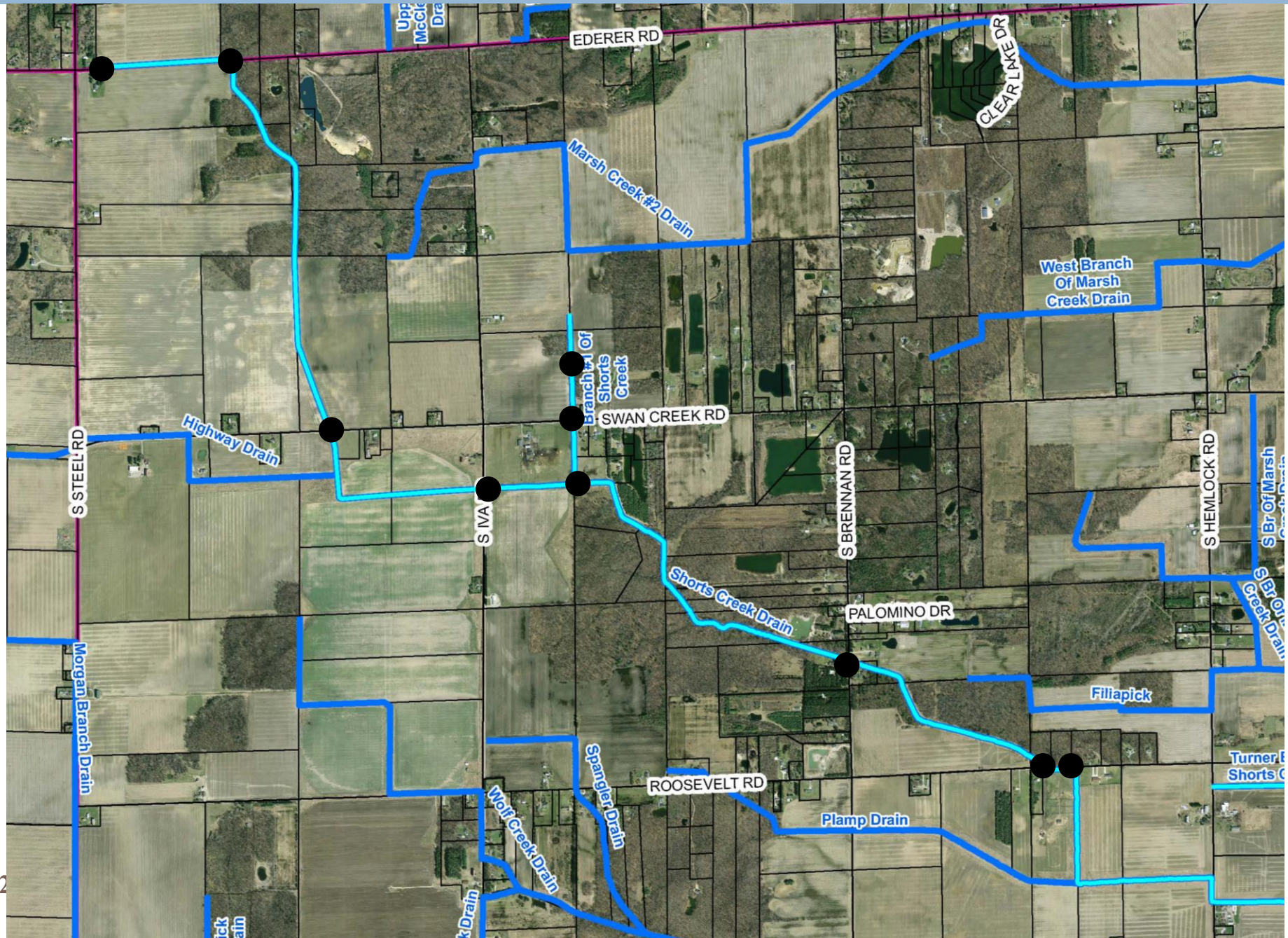
## Looking Upstream (West) From Hemlock Road

Some  
vegetation/  
sediment,  
good water  
flow





# Upstream Section (between Hemlock and Ederer Roads)





# Looking Downstream (South) From Roosevelt Road (West of Hemlock Road)

Vegetation  
and  
sediment,  
good water  
flow





# Looking Downstream (East) Along Roosevelt Road

Good  
water flow,  
area where  
work was  
completed  
in 2016





# Looking Upstream (North) From Roosevelt Road

Trees and  
brush,  
good  
water flow





## Looking Downstream (East) From Brennan Road

Small  
trees/brush,  
sediment  
bars, good  
water flow





## Looking Upstream (West) From Brennan Road

Trees and  
brush,  
good  
water flow





# Downstream (East) End of Culvert Under Brennan Road





## Looking Downstream (East) From Iva Road

Trees,  
sediment  
bars,  
good  
water  
flow





# Looking Upstream (West) From Iva Road

Good  
water flow





# Upstream (West) End of Culvert Under Iva Road





# Looking Downstream (South) From Swan Creek Road

Cattails &  
vegetation,  
slower  
water flow





## Looking Upstream (North) From Swan Creek Road

Appears  
recently  
cleaned,  
good  
water flow





# Downstream (South) End of Culvert Under Swan Creek Road





# Looking Downstream (South) From Ederer Road

Cattails &  
vegetation,  
stagnant  
water flow





# Looking Upstream (West) Along Ederer Road

Cattails &  
vegetation,  
stagnant  
water flow





## Upstream (North) End of Culvert Under Ederer Road





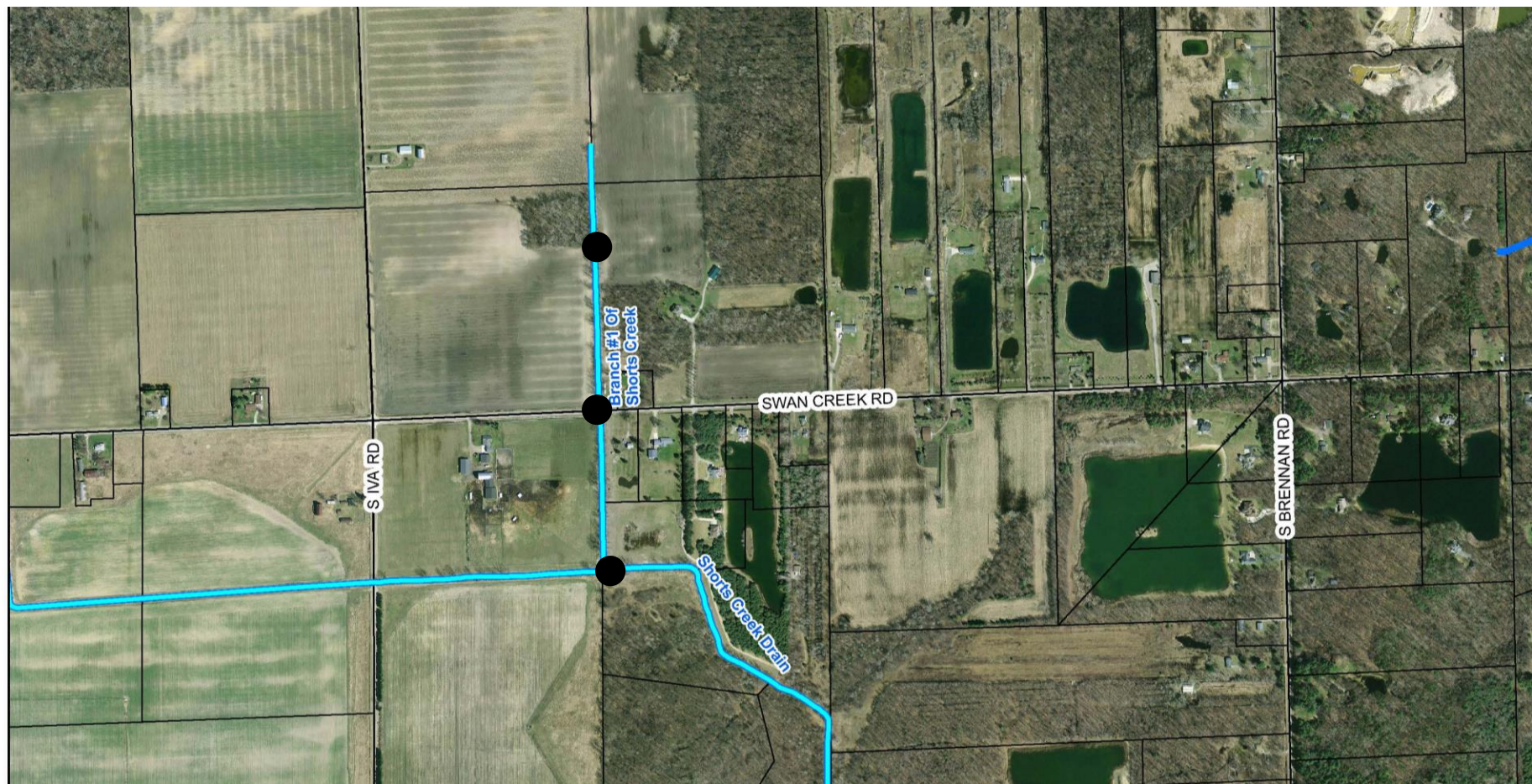
# Looking Downstream (East) Along Ederer Road

Cattails &  
vegetation,  
stagnant  
water flow





# Branch Drain (Between Brennan & Iva Roads)





## Branch - Looking Upstream (North) From Outlet at Main Drain

Large trees,  
vegetation,  
large  
sediment bar,  
no water flow





## **Branch - Downstream (South) End of Culvert Under Swan Creek Road**





## Branch - Looking Downstream (South) From Swan Creek Road

Larger  
trees,  
vegetation,  
stagnant  
water flow





## Branch - Looking Upstream (North) From Swan Creek Road

Large trees,  
vegetation,  
stagnant  
water





## Branch – Looking North in Middle of Drain

Large trees,  
vegetation,  
stagnant  
water





# Drain Inspection Recap

- ❑ At the road crossings on the main drain, there was decent water flow through much of the drain.
- ❑ Even with higher waters in other drains at the time of this inspection, there was a lot of room for the water level to rise before it would go over the banks. It appears that flooding of water over the banks is not typically a problem.
- ❑ Most of the culverts/crossings appeared to be adequate and in good shape, besides Raucholz Road bridge (in very poor condition).
- ❑ Sections of the main drain are highly wooded. It appears there are trees down in the drain through these area's which may be a cause to the stagnant or slower water flow upstream.
- ❑ The entire branch drain was full of larger trees, a lot of sediment and vegetation. Water flow was stagnant. The branch drain was in very poor condition.



# Summary of Drain Finances

- ❑ Spent approximately \$7,300 to repair 2 bends in drain and reshape slopes on main drain along Roosevelt Road & horse farm May-June 2016.
- ❑ Spent approximately \$2,500 to inspect the drain and spray portions of the drain in 2017.
- ❑ Assessed \$7,500 in 2016, assessed \$1,000 in 2017 and \$1,500 in 2018 to pay for maintenance work.
- ❑ Drain account currently has approximately \$370.



# Meeting Agenda

- ~~I. Introductions~~
- ~~II. Opening of Board of Determination Meeting~~
- ~~III. Outline of the Board of Determination Procedure~~
- ~~IV. Inspection Report~~
- V. Public Testimony - (3 minutes per person.)
- VI. Vote of Board of Determination
- VII. Appeal Procedures and Closing Comments
- VIII. Adjournment



# Appeal Process

## **Section 280.72a Judicial determination of necessity; filing of action.**

Sec. 72a. Whenever the board of determination finds by majority vote of the whole number of members that the drain is or is not necessary, any person feeling aggrieved by the determination may institute an action in the **circuit court** for the county in which the real property is located for a determination of necessity. The action shall be filed by the person aggrieved within **10 days after** the determination of necessity or no necessity by the board of determination.