

# New Tamarack Drain

## Board of Determination

James Township

6060 Swan Creek Road, Saginaw MI

Wednesday, April 12, 2023

6:00 PM



**Brian J. Wendling**

**Saginaw County Public Works Commissioner**

# Meeting Agenda

- I. Introduction
- II. Opening of Board of Determination Meeting
- III. Outline of the Board of Determination Procedure
- IV. Inspection Report
- V. Public Testimony - (3 minutes per person.)
- VI. Vote of Board of Determination
- VII. Appeal Procedures and Closing Comments
- VIII. Adjournment

# Role of the B.O.D.

- The Board of Determination's role is to make one decision:
  1. Whether the project is necessary based on public health, convenience or welfare
  
- The Board of Determination DOES NOT decide:
  - The scope of the project
  - The cost of the project
  - How much property owners and municipalities are assessed for the project

# Public Comment

- The speaking order will be on a first come, first served basis. Petitioner will have a chance to speak first.
- State your full name and address. Spell your last name for the court reporter.
- Limit comments to 3 minutes.

# Public Comment (cont.)

- Briefly state your position on the petition for the New Tamarack Drain. For example: “I support the petition for the New Tamarack Drain because . . .” or “I oppose the petition for the New Tamarack Drain because . . . .”
- Remember to stay on topic! Comments for tonight’s meeting are limited to the current petition for the New Tamarack Drain only.
- The Public Works Commissioner’s staff will gladly speak with you on other topics after the conclusion of tonight’s meeting.

# Drain Facts

- The New Tamarack Drain was established as a county drain in 1929.
- Maintenance projects via petitions were completed on various portions of the drain in 1960 (Main Drain), 1972 (Br. 1) and 1979 (Swan Creek Road Br.). It's been over 60 years since there was major work on the main drain.
- SCPWC received multiple calls/complaints in 2016 noting trees and sediment in the drain & farm tiles under water. A drain inspection was completed. We indicated that a petition is required for work on the drain, and sent a petition out to two different the landowners.

# Drain Facts Continued

- ❑ Call/complaint July 2019 due to standing water in the drain. It was noted that a petition is required for work on the drain. Petition was sent to landowner.
- ❑ 2020/2021 – SCPWC had multiple conversations with James Twp. Supervisor in regards to the how much work is needed on the drain, and that a petition is needed to complete this work. A second drain inspection was completed in 2020.
- ❑ 2021 – SCPWC solicited bids for tree and sediment removal only. 2 bids were received and both far exceeded the allowable maintenance limits.

# Drain Facts Continued

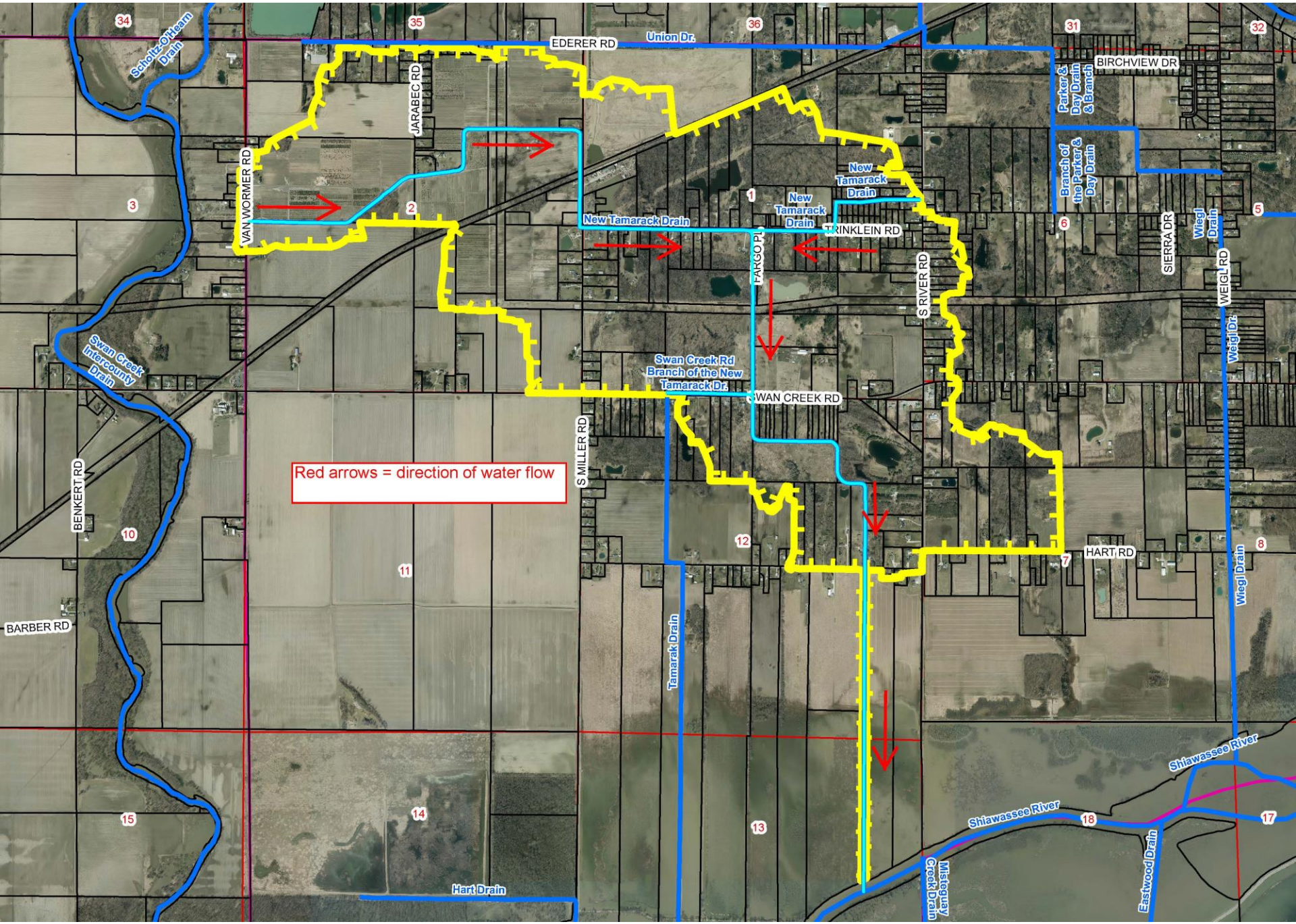
- ❑ SCPWC received a valid petition, dated January 12, 2023.
  - ❑ Petition signed by 6 free holders
  - ❑ Petition circulated by Mark Jebb





# Drain Facts Continued

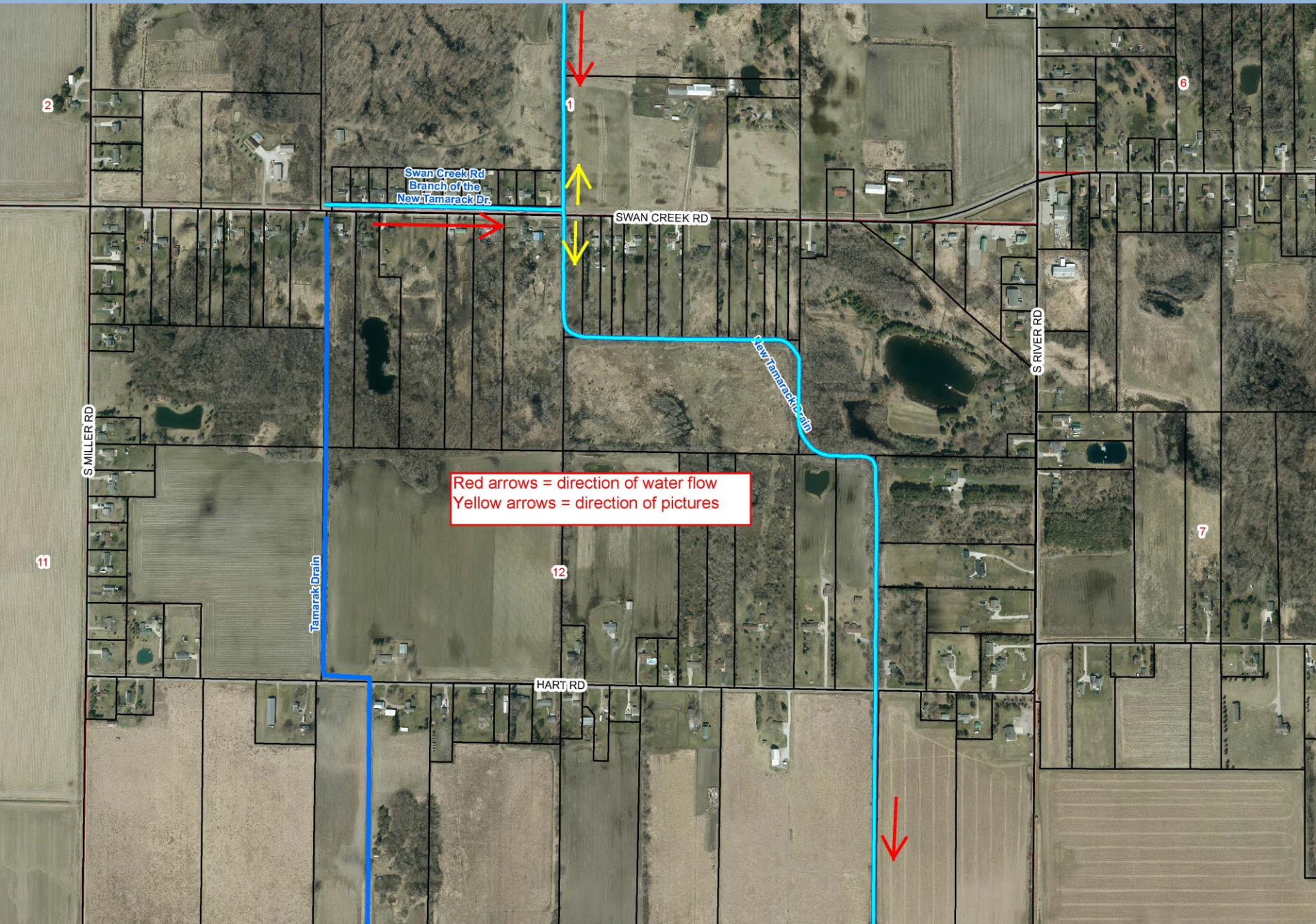
- Location of New Tamarack Drain - See Map
  - ▣ Approximately 24,950 feet long (4.7 miles)
    - 23,125 feet open ditch (4.37 miles)
    - 1,825 feet tiled drain (0.35 miles)
  - ▣ Approx. 1,234 acres
- What is the drainage district?
  - ▣ Lands that contributes storm water to drain
  - ▣ Drainage District serves as the special assessment district
  - ▣ New Tamarack Drain Drainage District includes:
    - James Township (approx. 99.74% of land area in district)
    - Swan Creek Township (approx. 0.26% of land area in district)
    - Saginaw County
    - Landowners – Approx. 300 parcels



# Drain Inspection

- On April 4, 2022 a field review of the Drain (inspection from the road crossings only) was completed as a result of the petition filed with the Public Works Commissioner. The following was observed:
  - Majority of the drain has trees and sediment in it. The drain had decent flow in the downstream stretches, but the flow was much slower in the upstream stretches. There was also a lot of water in the drain partially due to a recent rain event. There are many culverts in the drain, some of which may be set at wrong elevations potentially adding to water backing up in the drain.

# Drain Location Map – Southern End



# Looking South (downstream) from Hart Road

Trees &  
brush along  
drain



# Looking North (Upstream) from Hart Road



Trees along drain

# North End of Hart Road Culvert



# Looking South (Downstream) from Swan Creek Road Crossing

Trees in  
drain





# Looking North (Upstream) – Swan Creek Road

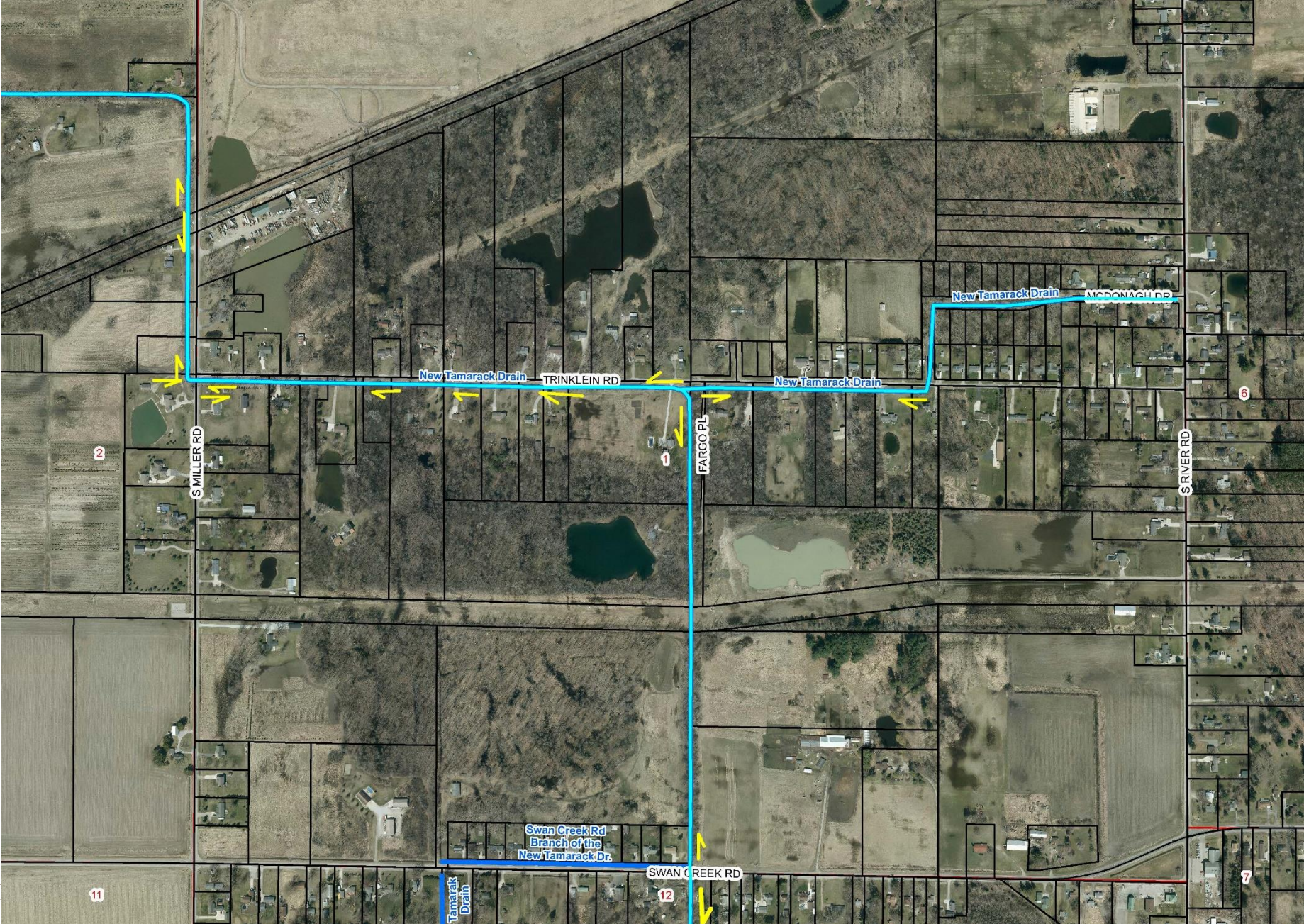


Lots of  
trees and  
brush in  
drain

# North End of Swan Creek Road Bridge



# Drain Location Map – Middle of the Drain



# Looking West (Downstream) from 7265 Trinklein Road

Stagnant water &  
sediment in drain



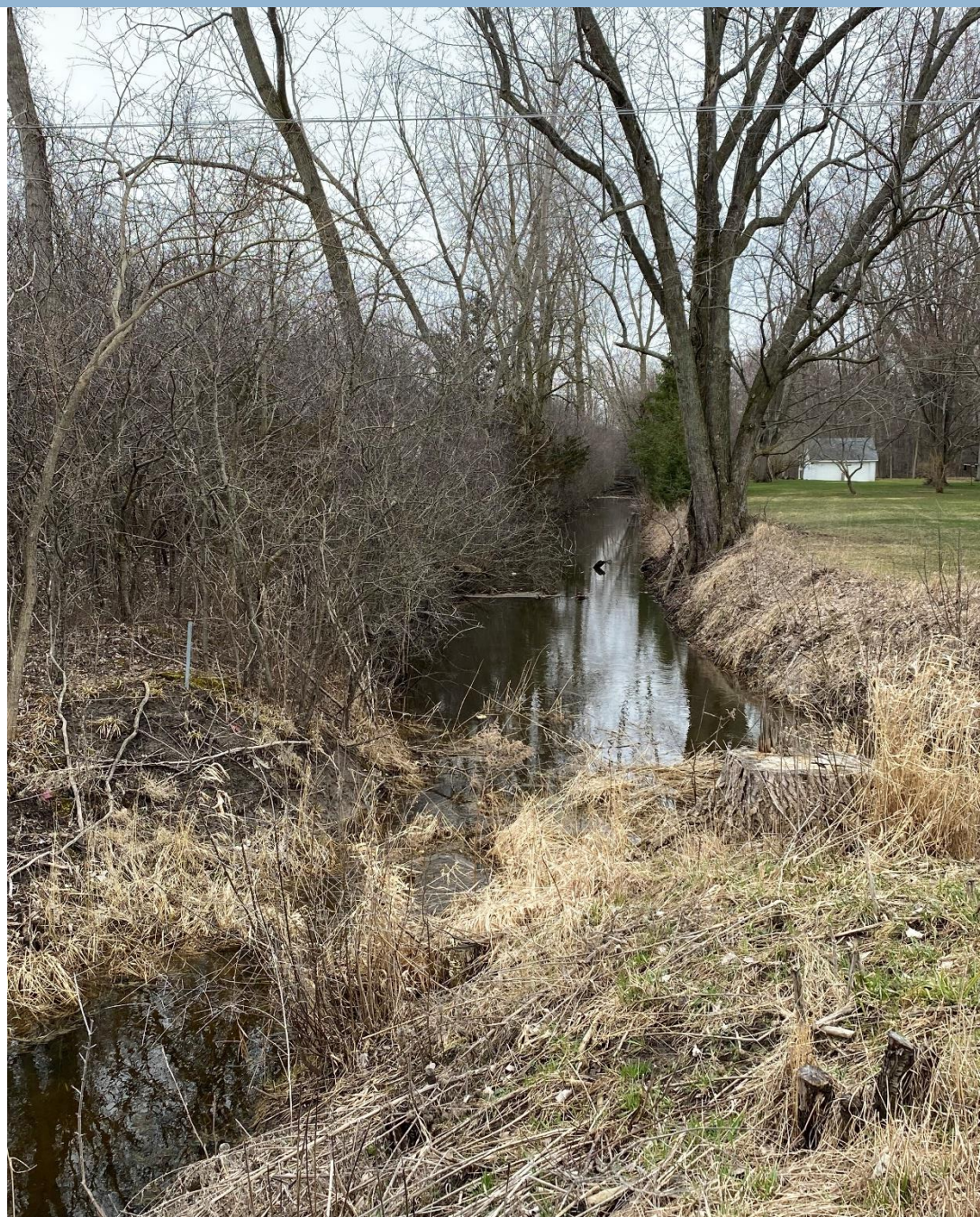
# Looking East (Upstream) from 7465 Trinklein Road

Stagnant water & sediment in drain



# Looking South (Downstream) from 7543 Trinklein Road

Stagnant water,  
sediment & trees  
in drain



# Looking West (Upstream) from 7543 Trinklein Road

Water &  
sediment in drain



# Looking West (Upstream) from 7609 Trinklein Road



Water &  
sediment in drain



# Looking West (Upstream) from 7851 Trinklein Road



Water &  
sediment in drain,  
trees along drain

# Looking West (Upstream) at Miller Road



Water &  
sediment in  
drain

# Looking East (Downstream) from Miller Road



Water & sediment in  
drain, trees along  
edge of drain

# Looking North (Upstream) from Trinklein/Miller Road Intersection



Water &  
sediment in  
drain

# West Side Miller Road Crossing



Water &  
sediment in  
drain

# Looking South from Rail Trail (along Miller Road)



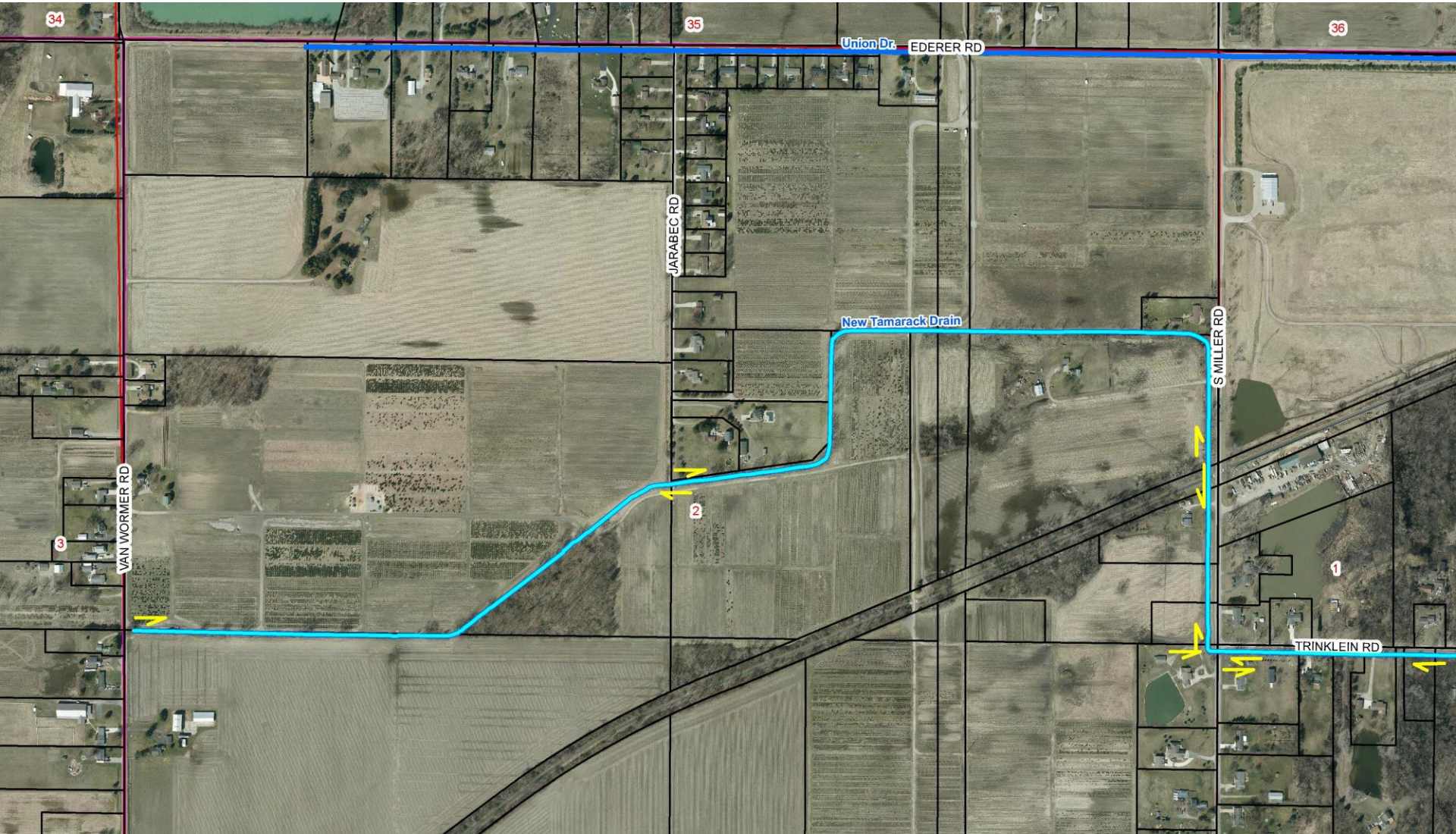
Water &  
sediment in  
drain

# Looking North from Rail Trail (along Miller Road)



Water,  
sediment &  
trees in drain

# Drain Location Map – Upstream End of the Drain





# Looking (Downstream) East from Jarabec Road Extended

Sediment,  
trees &  
water in the  
drain  
bottom



# Looking (Upstream) West from Jarabec Road Extended

Sediment &  
water in the  
drain bottom



## East end of Jarabec Road Extended

Water &  
sediment in  
drain – Culvert  
not visible



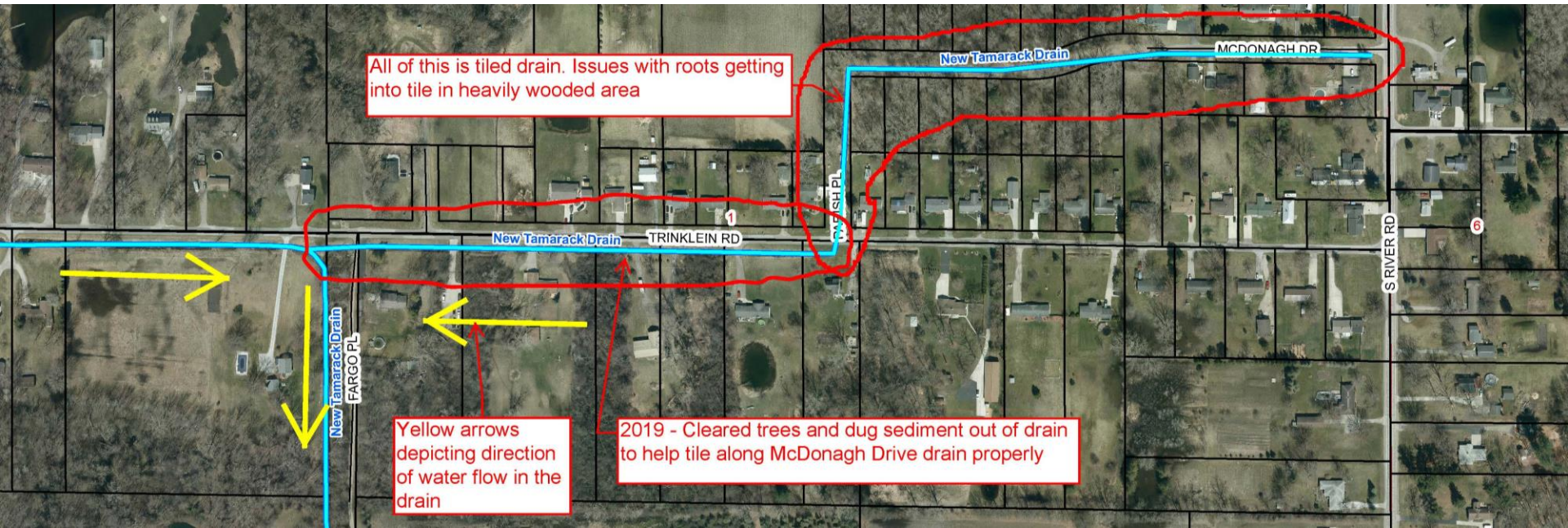
# Looking East (downstream) from VanWormer Road



Trees & sediment  
in the drain

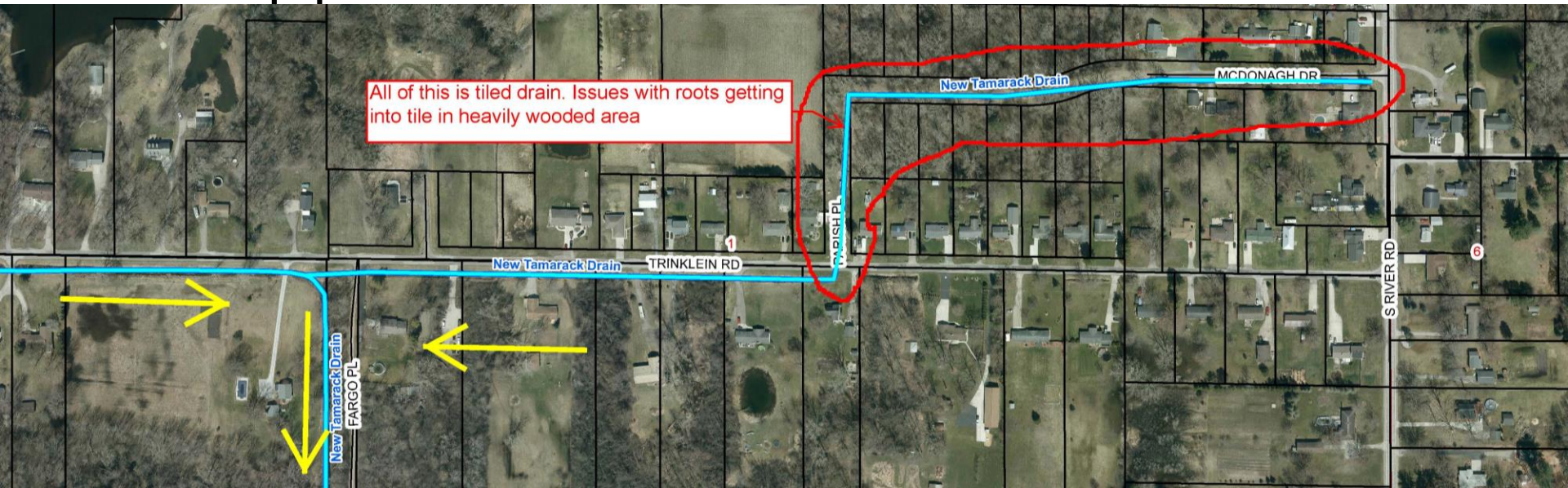
# Summary of Past Drain Work

- ❑ 2015 – 2017 – cleaned/root cut/repaired tile drain that serves McDonagh Drive spending \$1,500 total for all 3 yrs.
- ❑ 2019 – removed trees and dug sediment out of drain along Trinklein Rd. portion that is outlet to the tile that serves McDonagh Drive spending approx. \$7,800
- ❑ Inspected drain in 2016 & 2020



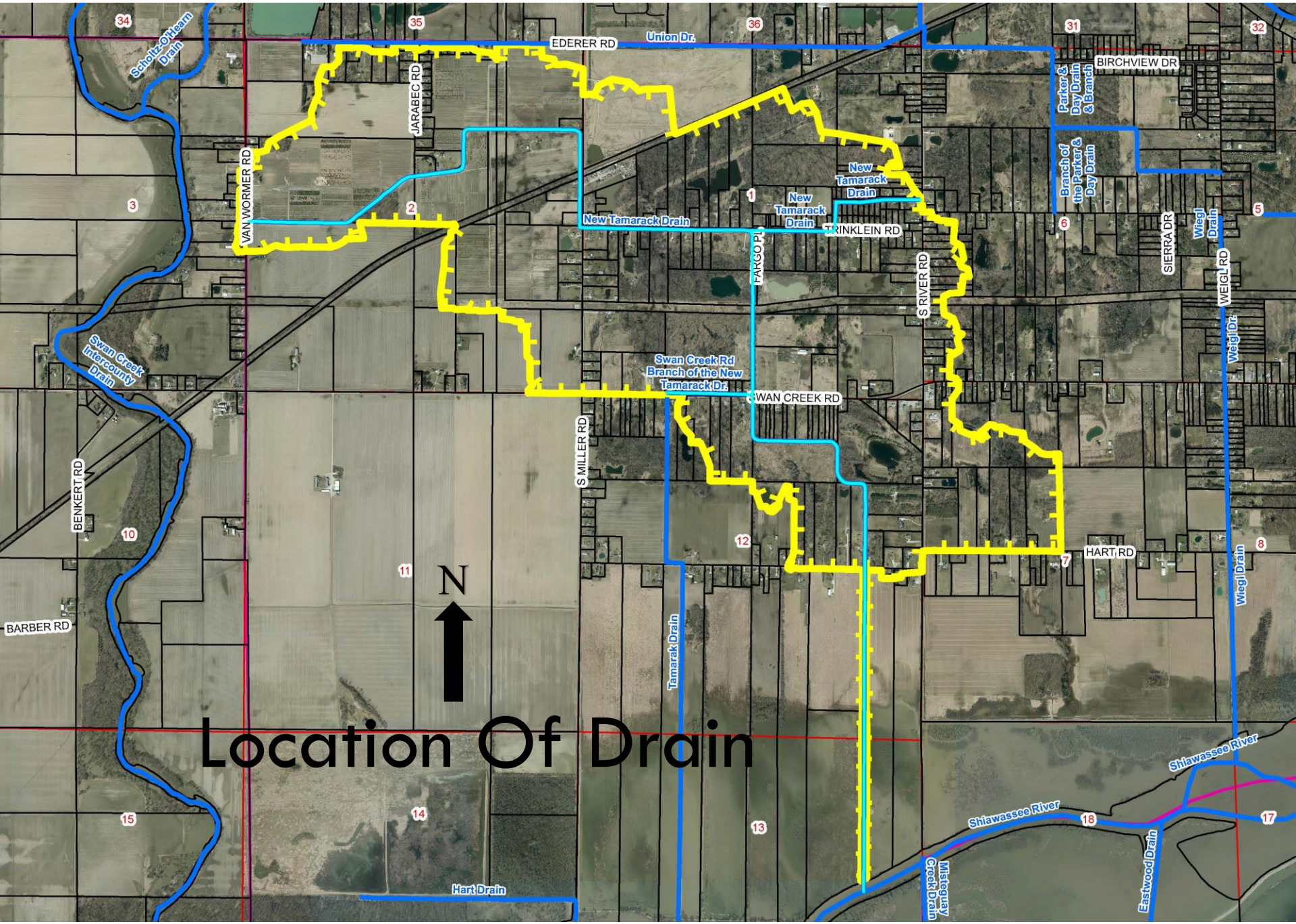
# Summary of Past Drain Work

- Sprayed the drain for brush along McDonagh, Trinklein & Miller Roads 2014, 2016 & 2020 spending approx. \$15,000.
- Feb. 2023 – jetted tile from River Road to woods along McDonagh Drive spending approx. \$700. We need to return Spring 2023 to root cut and foam the pipe to help prevent roots in pipe.



# Summary of Drain Finances

- ❑ The Drainage District was assessed in the recent past as follows:
  - ❑ 2014 – Assessed \$2,500
  - ❑ 2016 – Assessed \$7,500
  - ❑ 2018 – Assessed \$2,000
  - ❑ 2020 – Assessed \$16,000
  - ❑ 2022 – Assessed \$3,000
  
- ❑ Current balance in drain maintenance account = **-\$1,036**



# Location Of Drain





# Meeting Agenda

- ~~I. Introductions~~
- ~~II. Opening of Board of Determination Meeting~~
- ~~III. Outline of the Board of Determination Procedure~~
- ~~IV. Inspection Report~~
- V. Public Testimony - (3 minutes per person.)
- VI. Vote of Board of Determination
- VII. Appeal Procedures and Closing Comments
- VIII. Adjournment

# Appeal Procedures

- i. Whenever the board of determination finds by majority vote that the drain is or is not necessary, any person feeling aggrieved by the determination may institute an action in the circuit court for the county in which the real property is located. The action shall be filed by person aggrieved within 10 days after the determination of necessity or no necessity by the board of determination.